



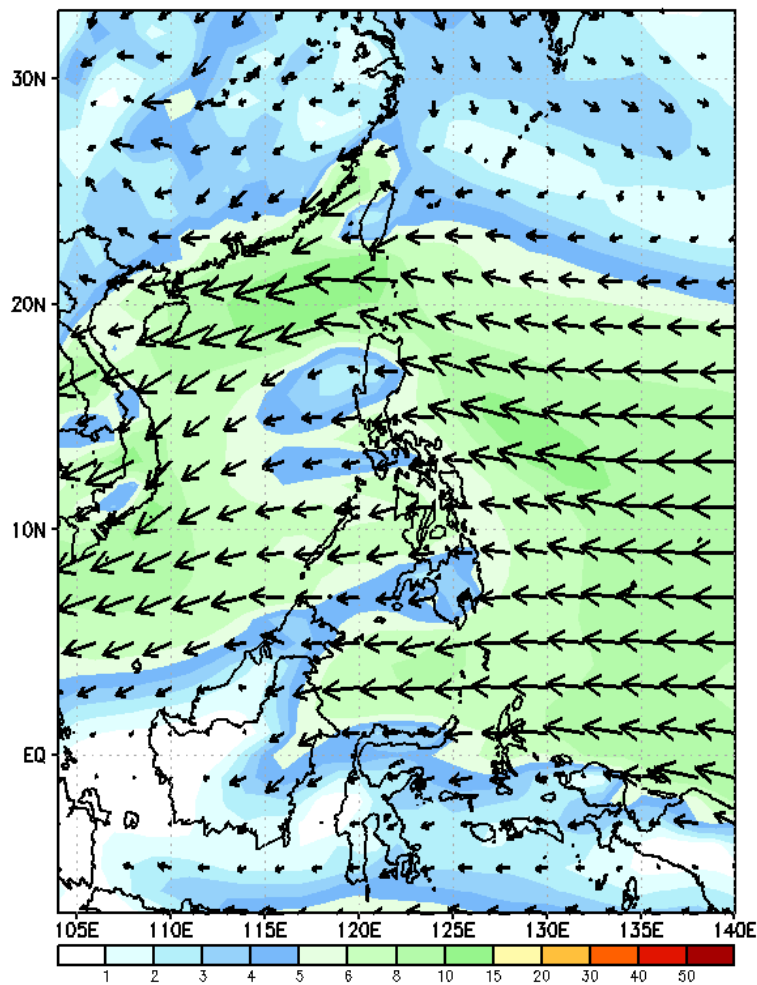
# Week 1 & Week 2 Forecast for the Philippines using GEFS Model



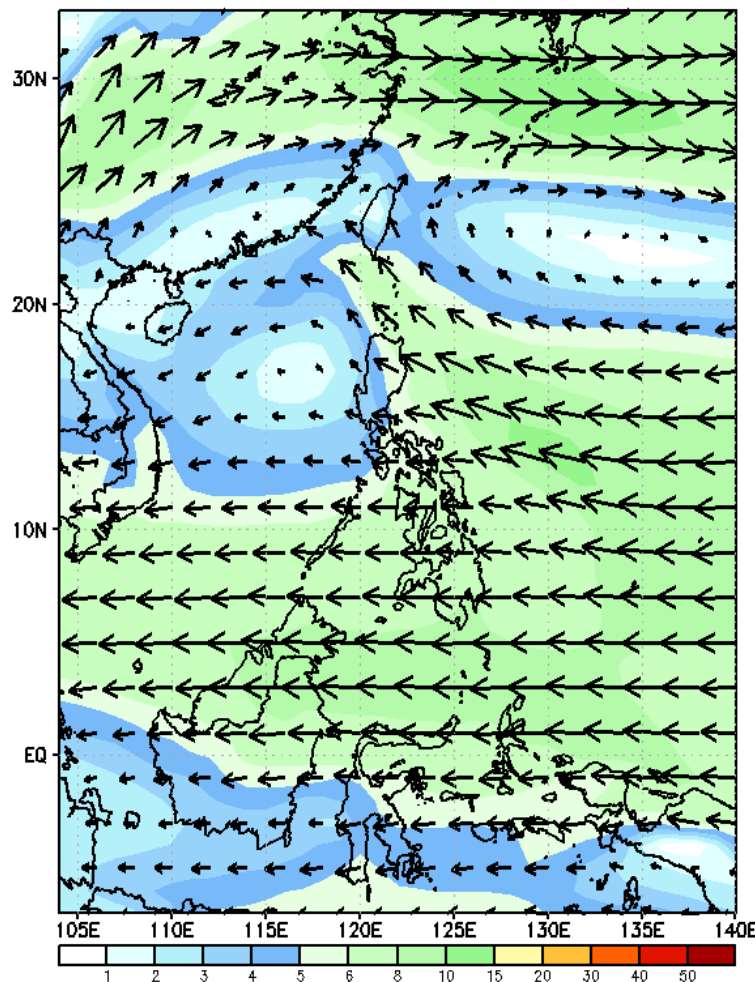
# GEFS Week-1 Wind Forecasts:

Week 1: Nov 15-21, 2024

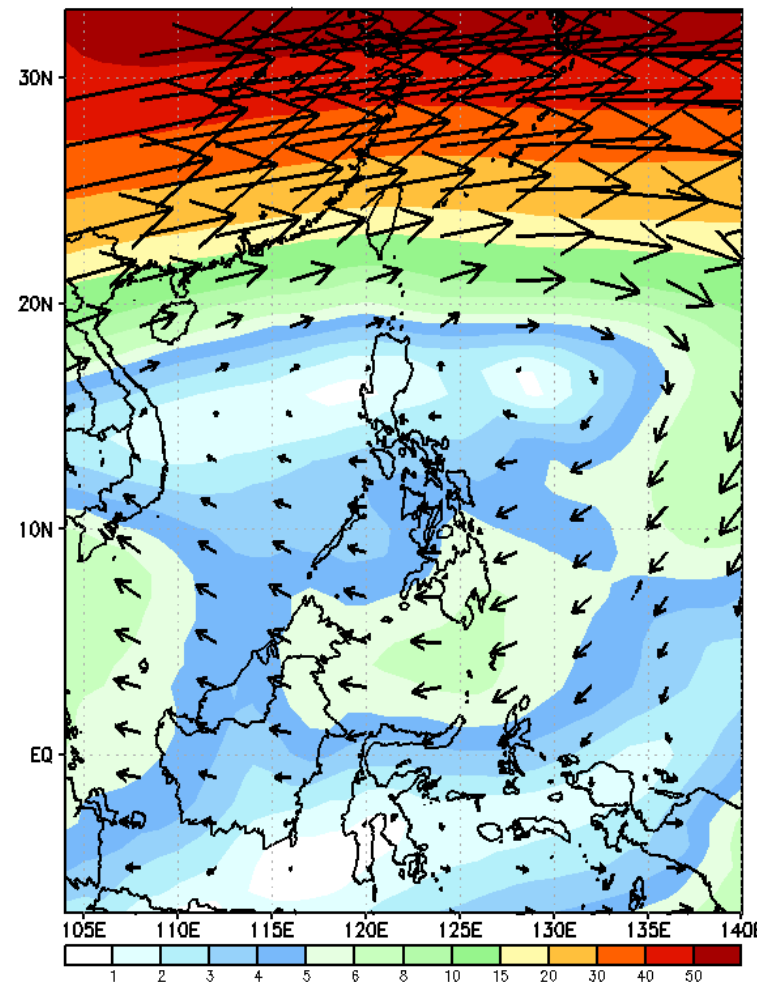
GEFS Week-1 850-hPa Wind Total  
Valid: 20241115 - 20241121



GEFS Week-1 700-hPa Wind Total  
Valid: 20241115 - 20241121

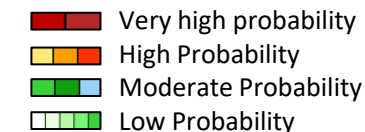


GEFS Week-1 200-hPa Wind Total  
Valid: 20241115 - 20241121



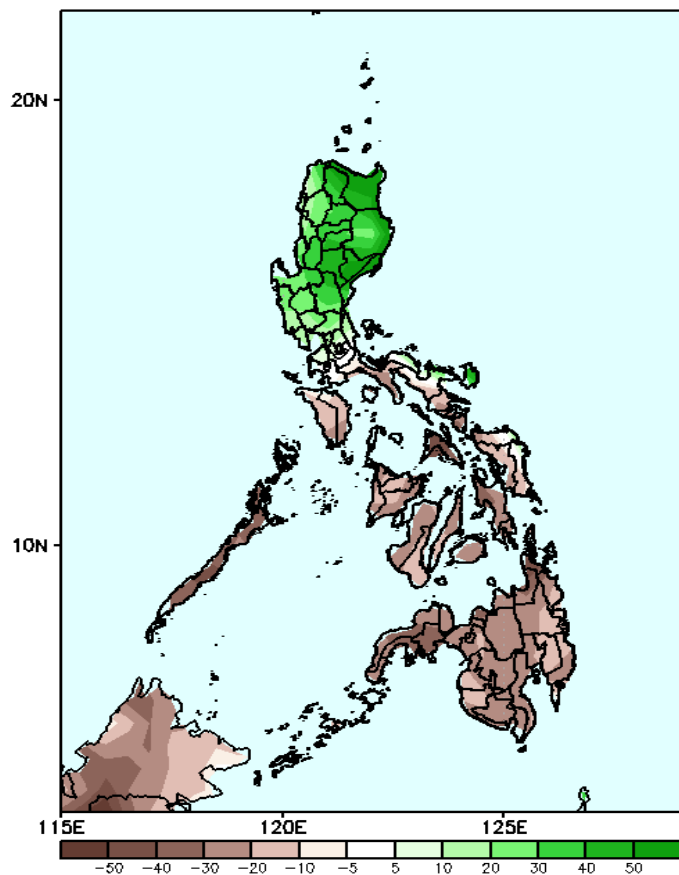
Northeast windflow will likely affect Extreme Northern Luzon, Easterlies will likely affect the rest of the country during the forecast period

# Precipitation Anomaly and Exceedance Probability > 25/50 mm

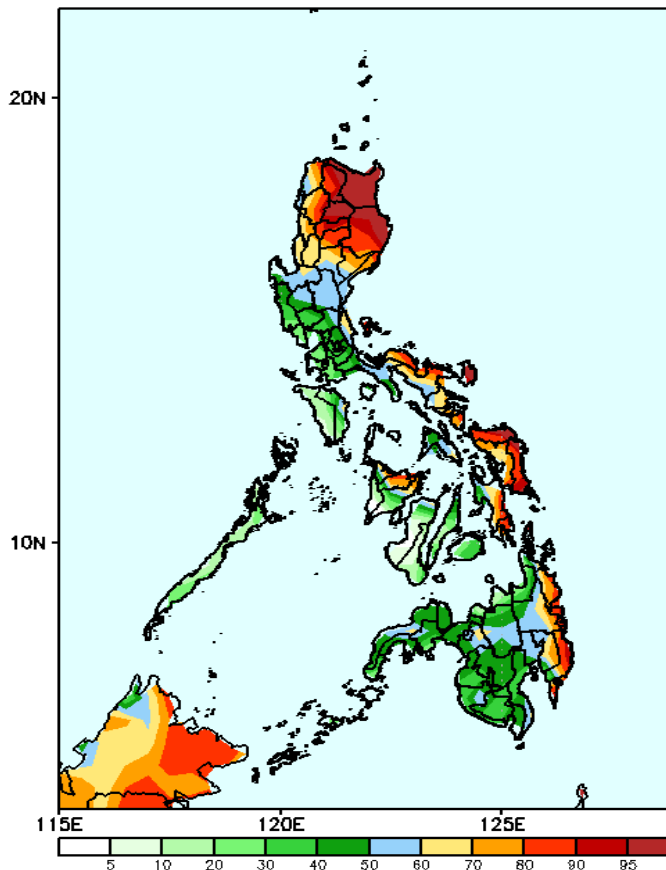


## Week 1 Nov 15-21, 2024

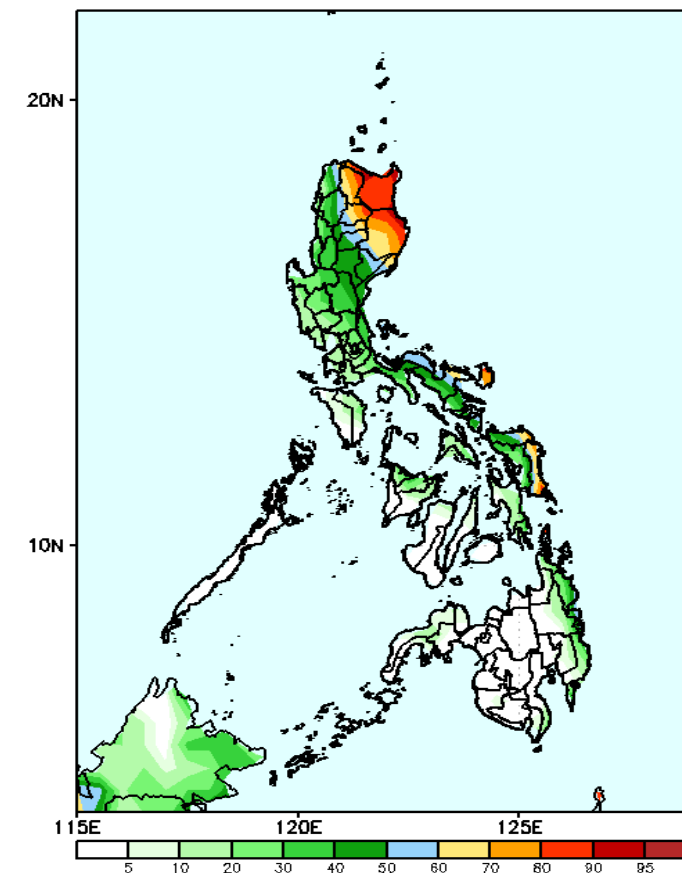
GEFS Week-1 Precip Anomaly  
Valid: 20241115 - 20241121



GEFS Week-1 Exceedance Prob. > 25mm  
Valid: 20241115 - 20241121



GEFS Week-1 Exceedance Prob. > 50mm  
Valid: 20241115 - 20241121



Increase of rainfall of more than 50mm will be likely in most parts of northern Luzon and central Luzon and Catanduanes while rainfall deficit of 10-50mm is expected for the rest of the country.

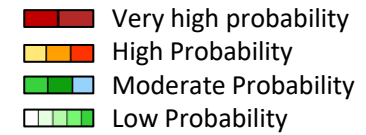
### Probability to Exceed 25mm

- High to a very high over most parts of northern Luzon, Bicol Region, Capiz, and eastern parts of Visayas and Mindanao.
- Moderate to high over most parts of central and southern Luzon, NCR, and the rest of Mindanao
- Low over the rest of Luzon and Visayas.

### Probability to Exceed 50mm

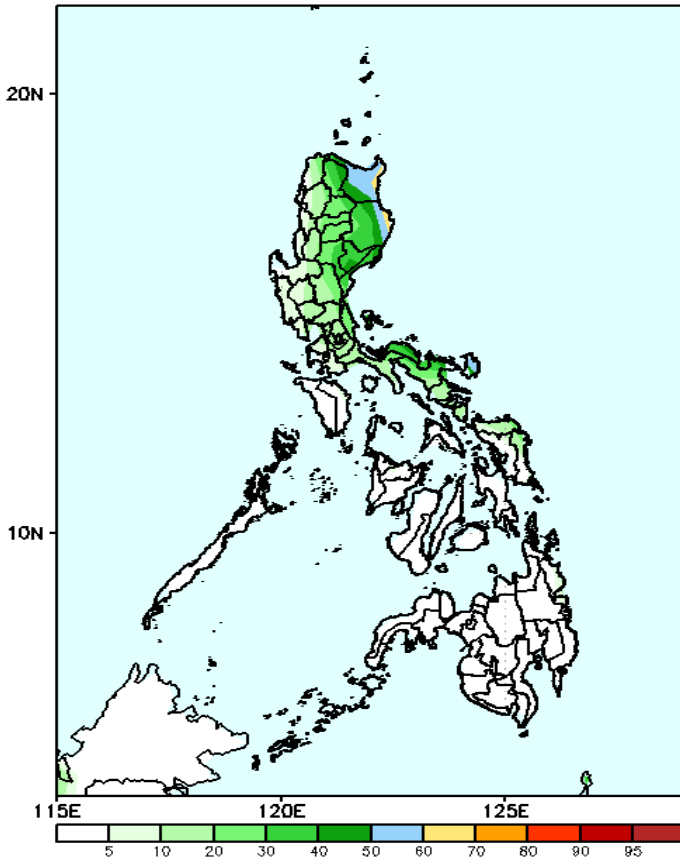
- High to a very high over Cagayan, Isabela, Batanes, Apayao;
- Moderate to high over the rest of CAR, rest of Cagayan Valley, rest of Ilocos region, Aurora, NCR, Central Luzon, CALABARZON, and portions of Bicol Region and Eastern Visayas;
- Low to moderate over the rest of the country.

# Exceedance Probability > 100/150/200 mm



## Week 1: Nov 15-21, 2024

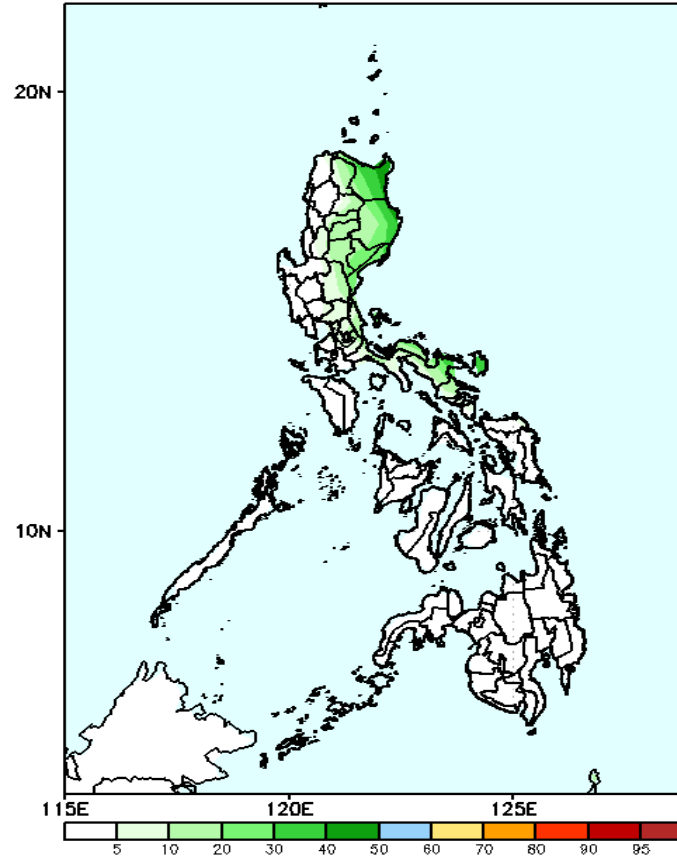
GEFS Week-1 Exceedance Prob. > 100mm  
Valid: 20241115 - 20241121



### Probability to Exceed 100mm

- Moderate to High over Cagayan Valley, CAR, Quezon and Bicol Region;
- Low to moderate over Central Luzon, NCR, CALABARZON, and Ilocos Region;
- Low over the rest of the country;

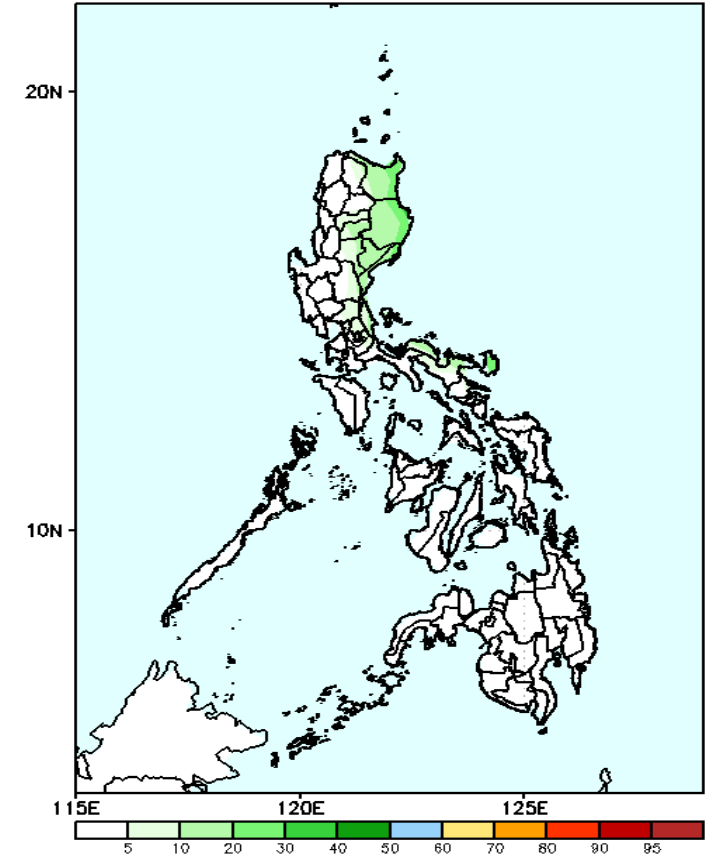
GEFS Week-1 Exceedance Prob. > 150mm  
Valid: 20241115 - 20241121



### Probability to Exceed 150mm

- Moderate over the eastern sections of Northern and Central Luzon, Quezon and Bicol region;
- Low to moderate over the rest of Northern Luzon;
- Low over the rest of the country.

GEFS Week-1 Exceedance Prob. > 200mm  
Valid: 20241115 - 20241121



### Probability to Exceed 200mm

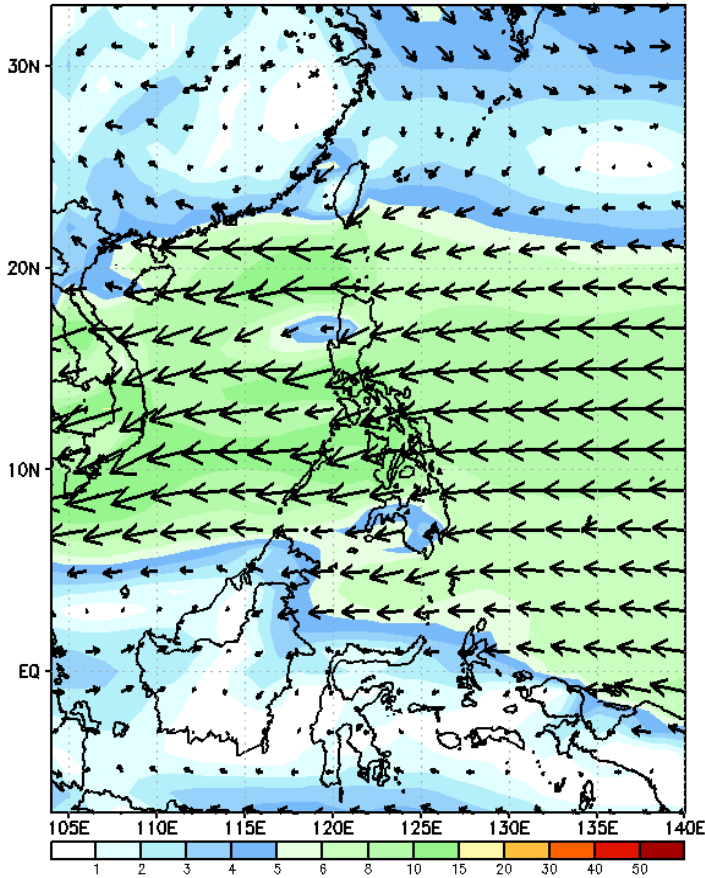
- Low across the country.



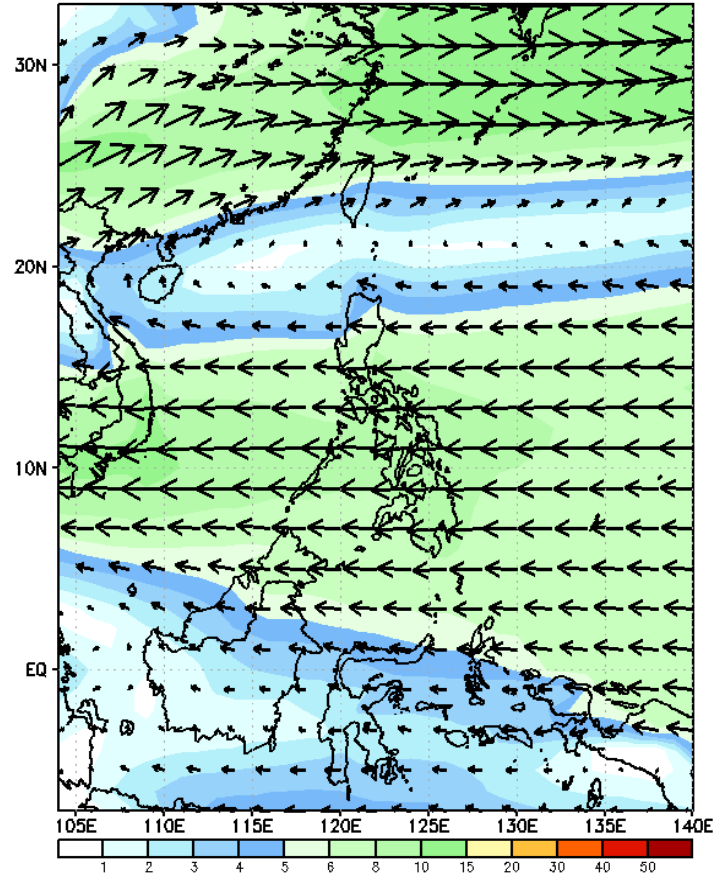
# GEFS Week-2 Wind Forecasts:

Week 2: Nov 22-28, 2024

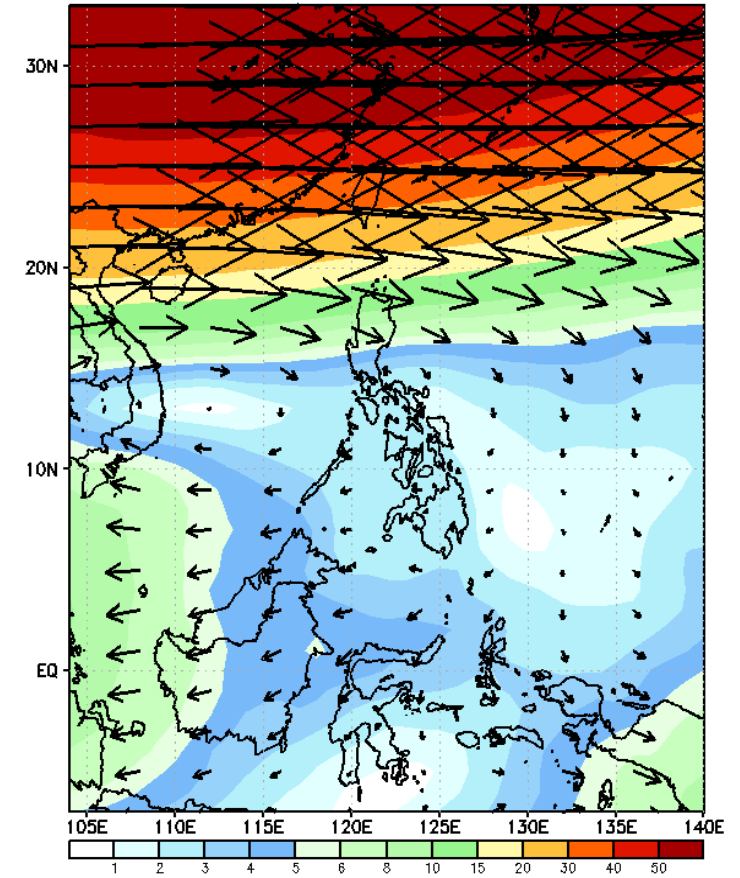
GEFS Week-2 850-hPa Wind Total  
Valid: 20241122 - 20241128



GEFS Week-2 700-hPa Wind Total  
Valid: 20241122 - 20241128

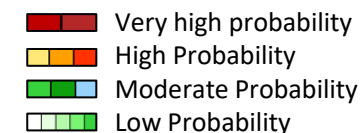


GEFS Week-2 200-hPa Wind Total  
Valid: 20241122 - 20241128



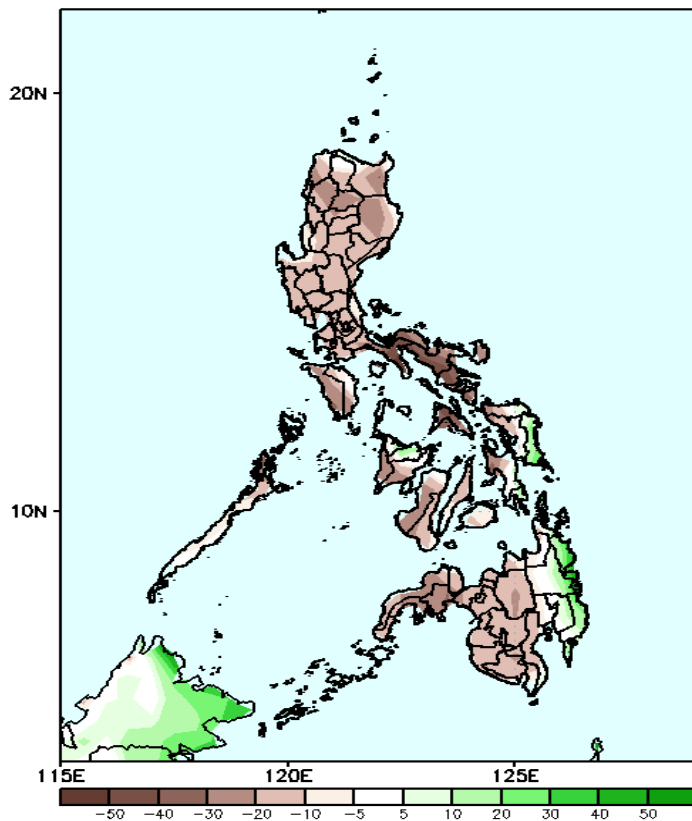
Easterlies will likely affect most parts of the country during the forecast period.

# Precipitation Anomaly and Exceedance Probability > 25/50 mm



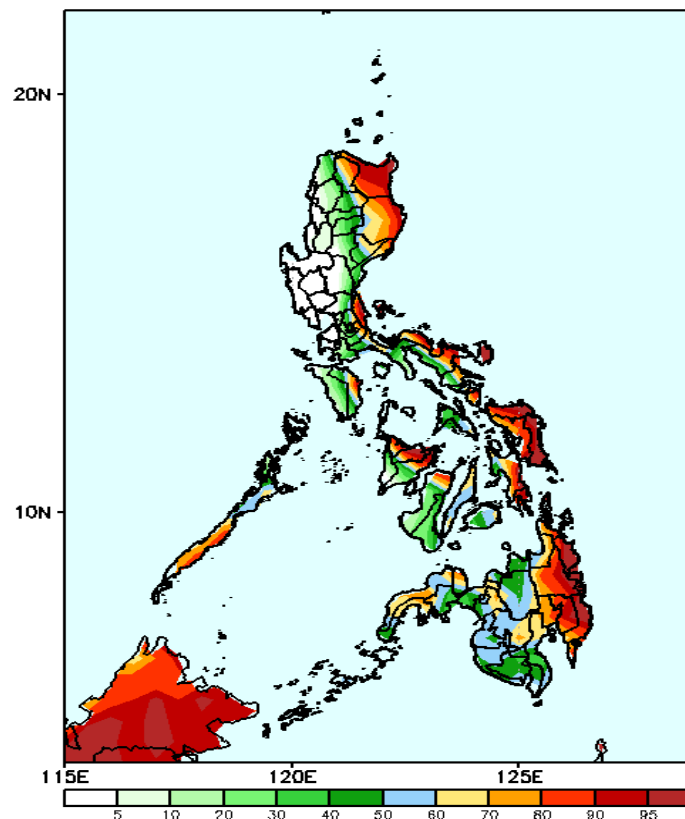
Week 2: Nov 22-28, 2024

GEFS Week-2 Precip Anomaly  
Valid: 20241122 - 20241128



Rainfall deficit of 20-60mm is most likely in most parts of the country except in some areas in Capiz, Eastern Samar and eastern Mindanao where there is 10-30mm increase of rainfall.

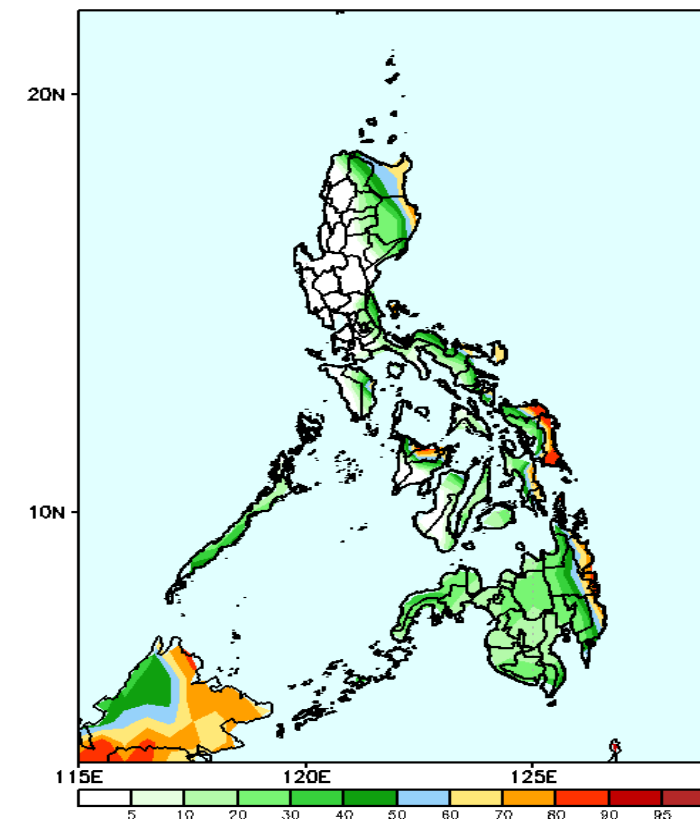
GEFS Week-2 Exceedance Prob. > 25mm  
Valid: 20241122 - 20241128



### Probability to Exceed 25mm

- High to very high over the eastern parts of the country, eastern parts of Panay and Negros Island
- Moderate to high over Mindoro, Palawan, CAR, and the rest of Visayas and Mindanao
- Low over the rest of Luzon.

GEFS Week-2 Exceedance Prob. > 50mm  
Valid: 20241122 - 20241128



### Probability to Exceed 50mm

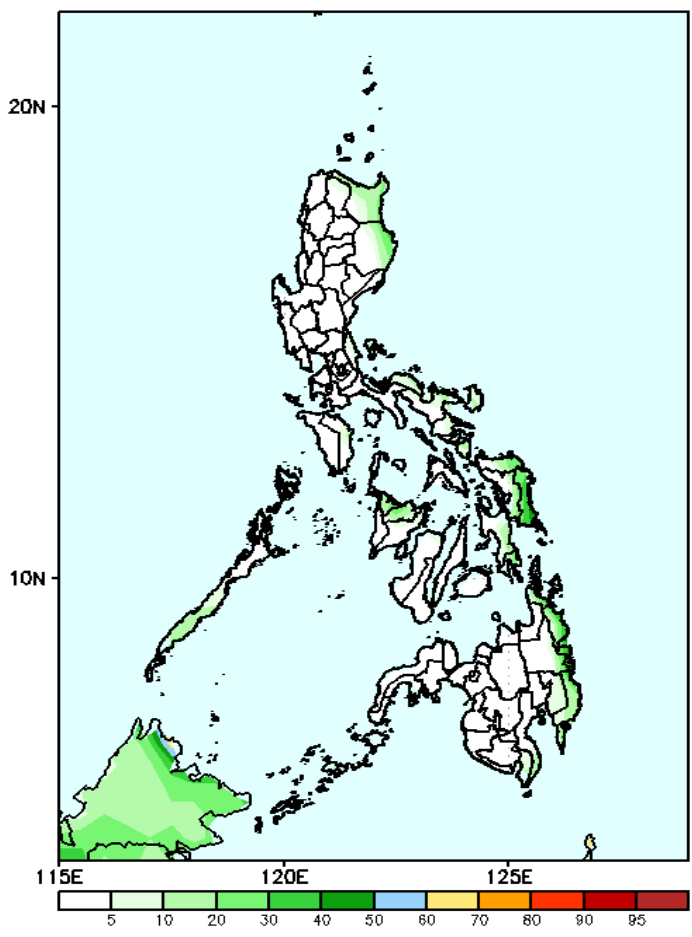
- Moderate to high over the eastern portions of Cagayan, Isabela, Quezon, Bicol Region, Eastern Visayas, Capiz, and the western and eastern portions of Mindanao;
- Low to moderate over the rest of the country.

# Exceedance Probability > 100/150/200 mm

- Very high probability
- High Probability
- Moderate Probability
- Low Probability

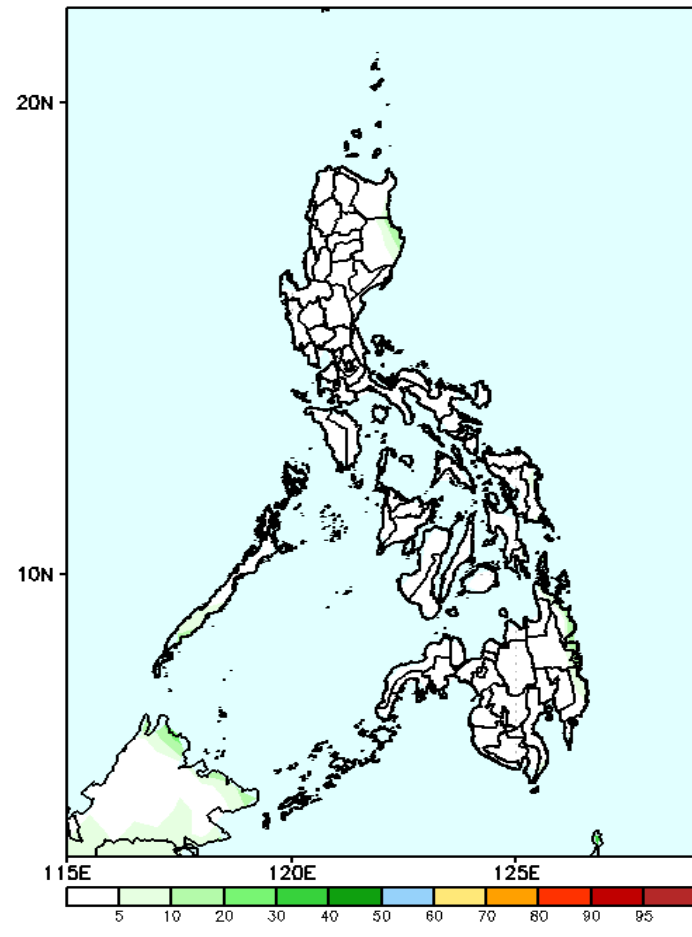
Week 2: Nov 22-28, 2024

GEFS Week-2 Exceedance Prob. > 100mm  
Valid: 20241122 - 20241128



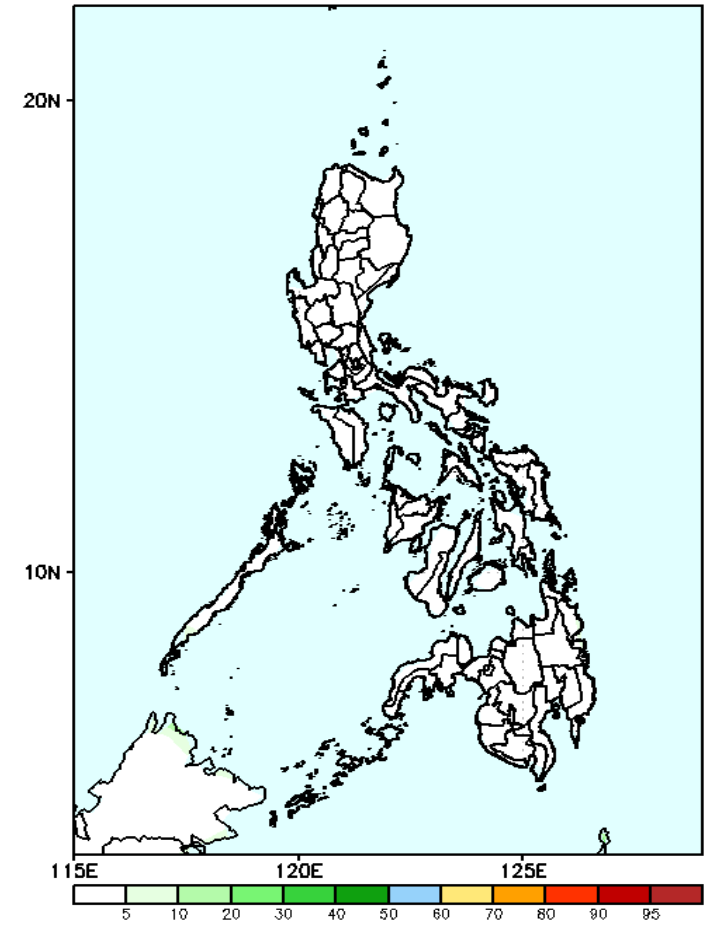
**Probability to Exceed 100mm**  
• Low across the country.

GEFS Week-2 Exceedance Prob. > 150mm  
Valid: 20241122 - 20241128



**Probability to Exceed 150mm**  
• Low across the country.

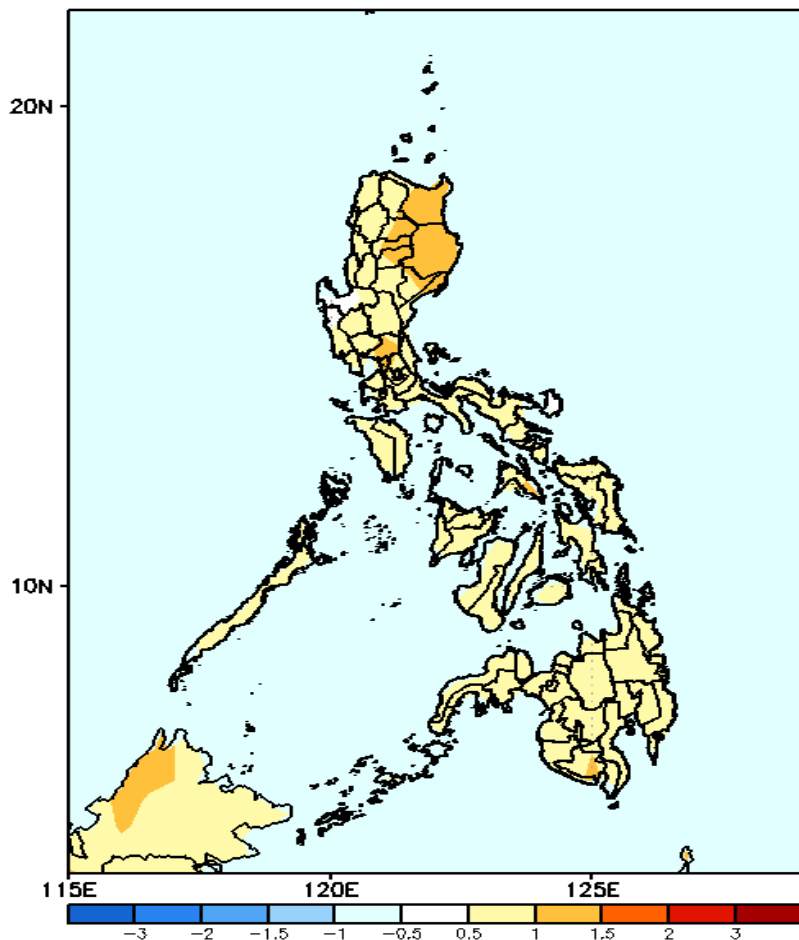
GEFS Week-2 Exceedance Prob. > 200mm  
Valid: 20241122 - 20241128



**Probability to Exceed 200mm**  
• Low across the country.

# GEFS Week-1 & 2 Forecasts: T2m Anomaly

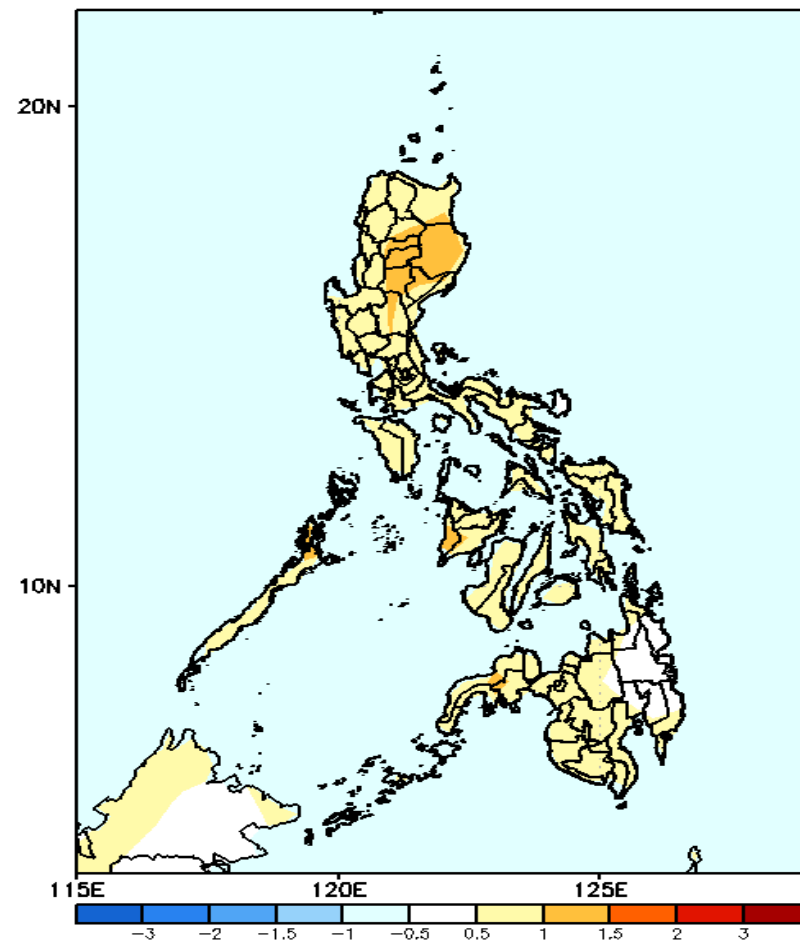
GEFS Week-1 T2m Anomaly  
Valid: 20241115 - 20241121



## 2m Temperature Week 1: Nov 15-21, 2024

Slightly warmer to warmer than average surface air temperature will likely be experienced in most parts of the country.

GEFS Week-2 T2m Anomaly  
Valid: 20241122 - 20241128



## 2m Temperature Week 2: Nov 22-28, 2024

Near to warmer than average surface air temperature will likely be experienced in most parts of the country.